

20th Annual

ROCHE J6 RANCHES

Durable Cattle, Quality Genetics

ANDERSON LIVESTOCK AUCTION • WILLARD, UTAH

Saturday, April 13, 2024 • 3 pm

SUPERIOR
LIVESTOCK AUCTION
Willard, Utah • 435-431-0000



Welcome!

We would like to thank everyone that has supported our bull sale over the years. This year marks our 20th year in the seedstock business. We have made many friends in the cattle and livestock industry. We take the confidence you have placed in us to improve your bottom line very seriously. Like our operation, you rely on the livestock to support your families and pay your bills. It is so neat to see the loyalty, recognition and approval of our bulls by the ranches that stock them. Some of you have bought bulls since day one and we sure appreciate it.



We are very proud of our heritage and the previous generations that have done so much for us. They have helped pave the way and provide a way of life that we love so much. Our father, Jeff Roche, had the idea to purchase the ranch that he was raised on and the place his father managed for 40+ years. Justin and Dusty were barely double digits in age and the year was 1992. We were all excited because it was bordered by the property that our grandparents, Doug and Doris Roche, had purchased from Grandma's dad, Job Hadfield. The year we bought the ranch calves were in the high seventies, lambs in the high forties, wheat was at \$3 and interest rates on loans were 10%-plus. Somehow, we have managed to make it so far! When we started on our own, we purchased 100 head of cattle from Holmgren Conner Cattle Ranch and 250 head of old ewes from our great-grandpa, Nick Chournos.

Currently, we run 1,500 head of cow/calf pairs and 5,000 head of sheep. We haven't been convicted of being the smartest, but we do know how to run and make a ranch work. We have taken the same approach to our bull program. We continue to improve the quality every year and this is our best offering yet. We say that every year, so it's a good thing! These cattle know how to get out and work and will produce a profit for you in a commercial environment. They have to or to make a ranch work.

We believe the best way to stay profitable is to take advantage of crossbreeding, especially maternal heterosis, and quality research proves that. Maternal heterosis is the most valuable tool available to improve cow performance and herd profitability. With the low inheritability of maternal traits, like fertility and longevity, a breeder can spend a lifetime trying to make the same progress for those crucial traits that can be realized in one easy cross. Studies show an equivalent of 1 to 1.5 extra calves over the lifetime of a female in favor of crossbred cattle because of the combination of greater longevity and extra calf weaning weight. If we could purchase a pharmaceutical that added that much performance and profit there is little doubt that producers would stand in line all day to buy some.

We would like to thank our employees, friends and family that make this all possible. Without them, we have no business. We welcome you to the sale and want you to know that we stand behind these bulls 100%. If for any reason you're not completely satisfied, we will make it right.

Sincerely,

Roche Ranches

Jeff, Justin and Dusty "Hootie" Roche



Terms & Conditions

TERMS:

Terms of this sale are cash or check unless arrangements are made prior to the sale. Settlement to be made immediately at the conclusion of the sale before animals are loaded. The right of property title shall not pass until checks have cleared.

BIDDING:

All animals will sell as single lots to the highest bidder. Any disputes or challenges regarding bids will be settled by the auctioneer, whose decision will be final.

RISK:

All animals are at the owner's risk prior to the sale and become the property of the buyer as soon as the animal is declared sold by the auctioneer. At that time, the buyer assumes all risk.

ANNOUNCEMENTS:

Announcements from the auction block will take precedence over any printed matter and any other announcements.

LIABILITIES:

Although incidents at livestock sales seldom occur, everyone attending this sale does so at their own risk. The owners and employees assume no liability, legal or otherwise, in the event of an accident, bodily injury, theft, act of God, errors in catalogs or omissions, or percentage verification. We try to keep the most accurate records possible and have bull-tight fences, but on a rare occasion, accidents of breeding occur that we are not aware of or cannot control. We will do everything we can to determine the correct percentage, but cannot guarantee it.

20-YEAR-20%-OFF SPECIAL:

We are celebrating our 20th Annual Bull Sale and want to thank you, our customers, by offering **20% OFF YOUR PURCHASE OF YOUR SECOND AND THIRD LOT PURCHASES!**

ABSENTEE BIDDING:

If you are unable to attend the sale but would like to bid on the lots offered we encourage you to call prior to sale day. Bids will be handled with the strictest of confidentiality.

TRUCKING:

All trucking is the responsibility of the buyer, but we will help make arrangements. Every effort will be made to minimize costs to the buyer. We will deliver the bulls to a central location for free.

GUARANTEE:

Every bull has been tested for Tric and semen evaluated by a licensed veterinarian. We will guarantee the bull selling in this sale to be fertile at the time of sale.

HEALTH:

Every bull in this sale, to the best of our knowledge, is free of any disease and will be eligible for interstate transport. All bulls were Dextomax treated. They have been vaccinated twice for IBR, P13, BVD, BRSV, 8-way Blackleg, One Shot Pasturella, plus Enforce.

CONTRACT:

The above Terms and Conditions of this sale shall constitute a contract between buyer and seller and be equally binding on both. Animals that are resold following the sale shall constitute a separate transaction and the rights and obligations of the two parties connected thereto are not covered by these Terms and Conditions.



Livestock Auction

ALL NEW PUREBRED PLATFORM

Bid.SuperiorLivestock.com

SEE PAGE 38 FOR INSTRUCTIONS!

Clear Creek Ranch
Winnemucca NV

Friends in the cattle business:

We hope 2023 was a good year. We are humble and grateful for the 20 years most of you have supported us in the seed stock business. We are very optimistic and excited for 2024. Just wanted to share a few thoughts and ideas that I have come across that I think will help us all be better stockmen and more profitable in our individual operations. Keep this thought in mind as I share a few of these ideas: "If all you are trying to do is essentially the same thing as everyone else, then it's unlikely you will be very successful."

Just a few thoughts on crossbreeding, crossbreeding maximizes production traits, and cuts costs. One of the most tried-and-true principles to maximize production traits while simultaneously reducing costs in commercial beef systems is crossbreeding. Crossbreeding gives commercial beef systems two primary benefits: heterosis (hybrid vigor) and breed complementarity. Lowly heritable traits like reproduction, health and cow longevity are best improved by crossbreeding. Leaving hybrid vigor on the table in a commercial herd is "a big loss."

Crossbred cows and maternal heterosis is a key to profitability on commercial cow/calf operations. Studies have shown net profit per cow is increased by \$75/cow/year because of, maternal heterosis. Ranchers would be wise to crossbreed even if heterosis was zero, due to the complementary effects of matching strengths of one breed to offset weaknesses of another breed.

Maternal heterosis accounts for about two-thirds of the total crossbreeding advantage. Maternal heterosis has more impact because of the effect on reproductive performance through earlier puberty, higher conception rate, faster breed back, greater longevity and the maternal impact on calf performance. Individual heterosis generally accounts for the other one-third of the potential 25 percent increase in lifetime productivity and is realized due to early vigor resulting in more live calves plus greater early calf growth rate.

Acknowledging that it is important to keep uniformity in the cow herd for a variety of reasons-and that some cowmen worry about keeping uniformity in the herd when crossbreeding. One way to keep uniformity in the cow herd is to use bulls of similar frame score. With a strong relationship between frame score and mature size, minimizing differences in frame scores of bulls used to produce females will help maintain cow herd uniformity. Capturing the benefits of heterosis allows producers to optimize genetic progress in economically important traits, especially those associated with reproductive efficiency and maternal performance.

I would also like to say, that we need to stop putting so much emphasis on weaning weight and focus more on price/per head. Here's what I mean: we shipped 380 head of #605 weight steers@1.50 per lb.= 908.00 per hd. We also shipped 100 head #410 weight steers@2.21 per lb.=906.00 per hd. The difference on weaning weight was almost 200lbs., but price per head was virtually none existent. The point I'm trying to make is; there are ways to reduce inputs. For example, moving calving to March-May to avoid problems with weather, scours, increased labor, and feed. By doing this we will see a drop in weaning weights, but we will be more profitable overall because of the decrease in inputs. Focusing on price per head versus weaning weight, I believe is the way we should be looking at things. I've been selling cattle for 19 years and I've seen time and time again #400 weight cattle bring as much or more per head than there #600 weight counterparts There's nothing prettier than seeing several hundred head of 600lb steers coming down the alley way. Unfortunately, all our banker cares about is PROFIT which equals subtracting our expense from our income.

I'm sure God's original cow was very efficient at converting low quality forages into milk and meat. Because of her unique four-stomach digestive system, she was able to eat and digest plants that could not be utilized by man or most other animals. I don't know what color she was, and I don't know what shape or size she was, but I do know she had the genetic ability to adapt to many different environments.

Over the years, man was successful in populating most of the earth with God's original cow. When placed in a new environment, these cows were able to adapt and change by "natural" selection into the most efficient animal for their new surroundings. Those that could not adapt did not survive.

Man, in all his wisdom eventually realized he could create the cow of his dreams through "artificial" selection. Color, size and shape suddenly became more important than efficiency and adaptability. Right from the start, different men had different ideas about what the perfect cow should look like. These men became the original seedstock producers- and the race was on to create the perfect breed.

Many breeders, to preserve the traits, they deemed to be most important, found it necessary to artificially change the cow's environment. They did this by providing the cow with extra feed and care. She was no longer required to survive strictly on the forage resources found within her environment. Man, finally succeeded in producing cows with the preferred color, size and shape- but they were not as efficient or as profitable as their ancestors had been.

To be more profitable, we need to get back to basics. We need to produce cows that fit our environment, instead of artificially changing the environment to fit our cows. Cows must be environmentally adapted to efficiently convert available resources into beef, with a minimum amount of inputs. Profit is measured by subtracting our expenses from our income, it is affected very little by color and/or breed of our cattle.

Our goal at Roche Ranches is to identify and produce seedstock animals that can produce and reproduce with minimum inputs- in many different environments. We believe a cow ought to be supporting the ranch, instead of being supported by the ranch. Maybe Chip Hines said it best, "Your cows don't care if you're profitable or not. If you're willing to do the work for them they'll let you." Our cows run on short native grass year-round with essentially no hay or supplements. We let the environment sort out the good ones. Suppose you could turn your entire cowherd loose in the wild with absolutely no human contact for 50 years. What do you think the survivors would look like?

We look forward to seeing you Saturday, April 13th @ 3pm Anderson Livestock Auction in Willard, Utah, for our 20th annual livestock sale!

For catalog or general questions call or email: JustinRoche@RocheRanches.com or (435) 327-1842

Roche Ranches

Jeffrey, Justin and Dusty "Hootie" Roche

20th Annual

ROCHE J6 RANCHES

Durable Cattle, Quality Genetics
Saturday, April 13, 2024. 3 pm

ANDERSON LIVESTOCK AUCTION • WILLARD, UTAH

"For the commercial cattleman, it has been determined that the reproductive traits are five times more important than growth traits and ten times more important than carcass traits." (Brinks, et l., 1983b)
For the cow producer...this has not changed!

Yearly cow cost is more important than cattle prices. Cattle prices are a moving value. Cow costs are a stable target with known properties. At the present time there is a wide range of cow costs across the country. What factors are involved in cow costs? Land costs, environmental conditions, land taxes, amount of precipitation, hay feeding, land type, private lease, Forest Service or BLM permits, depreciating equipment, and last but not least is management. Yes, management is the actual determiner of cow costs within a common range of environmental conditions. Two ranches located next to each other may have large differences in cow costs that can be related only to management and nothing else.

Average cow costs are now rising above the \$700 to \$800 mark. (How high is above average?) If this was lowered to \$500, how much could you stick in your pocket? Two hundred per cow x number of cows run on the ranch will get your attention. One known instance in a good environment is crowding \$400. How many more could do this? Shaving \$200 would be the easiest money you ever made.

Management is the key, available to anyone with incentive to move out of the status quo rut. Doing the same thing year after year with no improvement in profitability has to change. It's up to you. Management is the process of evaluating each segment of an operation and applying different procedures than what has been followed.

The slow increase in cow size has reduced profit per acre while lessening the efficiency of her internal systems. The amount of forage required to run 100 head of 1,400-pound, heavy milking cows is sufficient to run 137 1,000-pound, low milk production cows. More calves worth more per pound. Can you find anything wrong with that? Oh, yeah, you are worried that the feedlots and packers will not like your smaller calves. It is time to take care of you instead of subsidizing the feedlot and packer.

We have appreciated doing business with our friends and neighbors for over 20 years. We have a great set of bulls that will go to work for you. We look forward to seeing you on sale day.

Sale will be broadcast live on Bid.SuperiorLivestock.com

FREE LUNCH WILL BE PROVIDED
FOR MORE INFO & TO SEE THE
CATALOG VISIT:
ROCHERANCHES.COM

Cow Lots



BW: -2.0 • WW: 56 • YW: 107 • Milk: 36

Cow Info:

We will be offering 40-50 head of 3-4-year-old cows, many pairs and heavy breds. All of these cows will be bred by Roche Ranches herd bulls and a select few AI bred to ABS standout True North, who is a SAV Rainfall son and a purebred Angus. These cows are for sale, based solely on frame size, they are a tick large for our operation, they will mature into 1,300-1,400 lb. cows. They have foraged the majority of their lives and have been fed very few times. These cattle know how to range out, and make a living with what your range will provide. They have learned to use snow for water in the winter, and they know how to work in short grass and graze brush. The pairs will have matching tag numbers with dams and calves will be slick and non-vaccinated. Bred cows will be confirmed pregnant by Dr. Ira Mickelsen, and will sell in groups according pregnancy status. All cows will be poured and will have received a modified live Vibrio/Lepto shot and 8-way. Bid confidently on a really nice set of cows that have their whole life ahead of them.

2-YEAR-OLD BULLS

Lots 1-20 Represent one of the best sets of 2-year-old bulls, that we have ever offered. We are very excited for you all to go through and evaluate this tremendous set of bulls. All bulls have been trich and semen tested by Dr. Ira Mickelsen. All bulls worked as yearlings, mostly in the Nevada desert, and Utah ranch. Bulls will all be able to handle a tremendous workload, and I would not hesitate to use these bulls at a 40:1 ratio. They're all hard footed, know how to travel and breed cows. I cannot overestimate the importance of know-how; these bulls gain by working as yearlings. These bulls are not the leftovers from the previous year's sale, on the contrary, these are some of my favorite bulls, of the 2021 calf crop. Bulls were grazed outside until the 1st of January before getting any harvested feed in the yard. For that reason, they will not be as big as other sales 2-year-old bulls, but they will be sounder and able to service more cows. Bid with confidence on these good 2-year-olds.



RB TRASK 52 L125 E614 ET

DOB: 9/20/2017

HEREFORD

AHA# 44007748

RUPERT GEM

NT RUPERT 52

QUEEN REPEATER 40

NT MISCHIEF AUSTIN

BTF 301 L125 ET

KCF MISS 4060 T215

- Fleshing ease
- Long-lived problem-free daughters
- Excellent feet
- Adequate growth for commercial profitability

SPRING 2024 EPDs

CED	BW	WW	YW	Milk	M&G	FAT	REA	Marb	BMI	BII	CHB
1.6	2.6	34	49	15	32	.032	-0.26	0.11	317	372	66

J6 TRASK 0106

3/4/22

1/2 AN 1/2 HERF

1

TRASK x NT RUPERT

J6 0106 X J6 998

BW	75
WW	685
YW	1,100

BW	1.8	WW	52	YW	91	Milk	23	Gain	2.9	SC	42
----	-----	----	----	----	----	------	----	------	-----	----	----

Out of a bigger framed, all black cow. Grandam is still working as a 15-year-old. This brockle faced bull is really good. Super disposition.



Lot 1

2-YEAR-OLD BULLS

J6 TRASK 010

3/8/22

1/2 AN 1/2 HERF

2

TRASK x NT RUPERT

J6 010 X J6 4008

BW	70
WW	770
YW	1,180

BW 1.3 WW 60 YW 109 Milk 24 Gain 2.5 SC 41

Lots 1-4 are paternal brothers, all in a BWF package. Not sure which one is the best, we will let you decide come sale day. These four brothers can be used on heifers, and will make as nice of set of replacement heifers or feeder steers. If you want the Hereford influence without the feather neck calves lots 1-4 are your ticket. All four lots are backed by super productive, desert raised cows with longevity.



Lot 2

J6 TRASK 088

3/8/22

1/2 AN 1/2 HERF

3

TRASK x NT RUPERT

J6 088 X CHARLO

BW	70
WW	710
YW	1,050

BW 1 WW 54 YW 89 Milk 18 Gain 2.4 SC 42

Most moderate framed of the Trask brothers. Would work best on a bigger framed set of cows.



Lot 3

J6 TRASK 079

3/6/22

1/2 AN 1/2 HERF

4

TRASK x NT RUPERT

J6 079 X CEDAR RIDGE

BW	74
WW	680
YW	1,055

BW 1.9 WW 58 YW 93 Milk 25 Gain 2.5 SC 42

My favorite of all the 2022 bull calves. This boy is 8 pounds of sugar in a 5 pound package.



Lot 4

2-YEAR-OLD BULLS

J6 RANGEMASTER 769

3/12/22

3/4 AN 1/4 BM

5

J6 RANGEMASTER 987 X EVANS BEEFMASTER

J6 769 X SPECIAL DESIGN 878

BW	76
WW	625
YW	1,045

BW 2 WW 56 YW 91 Milk 20 Gain 2.6 SC 42

Dark, cherry red bull sired by our 2020 born bull, J6 Rangemaster 878, that sold to Lou & Teresa Andersen for \$5,000. This bull is better than his dad, if you need around 100 head of cows serviced this summer, this is your guy. Dam goes back to pathfinder Angus bull, New Design 878, who sired over 80,000 head of calves over his lifetime of sales with ABS.



Lot 5

J6 RANGEMASTER 254

3/24/22

1/2 AN 1/4 SM 1/4 BM

6

J6 RANGEMASTER 414 X EVANS BEEFMASTER

J6 414

BW	72
WW	600
YW	1,025

BW 0.8 WW 52 YW 88 Milk 19 Gain 2.5 SC 41

This panda-bear colored bull is almost a replica of the bull Quirt Pug-sley bought on our 2022 sale. Not sure how to make this bull much better. His progeny will be phenomenal, female progeny will make excellent cows.



Lot 6



- Sharp Ranch -

"I have been purchasing bulls from out-of-state breeders over the past 10 years and this will be my fourth year purchasing bulls from Roche Ranches. The bulls that Roche Ranches are producing continue to exceed expectations each year in quality and value. Roche bulls are high caliber specimens that have helped improve my herd's breed-back numbers and continue to yield the high quality calves that sellers are looking for. I am a believer in supporting fellow local businesses and look forward to the years ahead doing business with the Roche family."

- Zan & Vivian Sharp

2-YEAR-OLD BULLS



ROBERTS

SOUTH POLL

Calving ease, combined with unmatched fleshing ability on grass. Superior carcass quality. Dam produced into her teens. Daughter by Roberts will be unsurpassed for longevity and fertility.

SPRING 2023 EPDs

BW	WW	YW	Milk
-2.5	45	78	16



Jeff & Alice feeding

J6 ROBERTS 9006

3/27/22

1/2 SOUTH POLL 1/4 AN 1/4 HERF

7

ROBERTS X BENT TREE

J6 9006 X J6 RIBEYE

BW	70
WW	600
YW	1,095

BW 1.1 WW 50 YW 89 Milk 18 Gain 3.2 SC 42

All black and good, like black history month. The South Poll breed is making waves across the country for their fertility, longevity and moderate frames packed with muscle. This bull can be used on heifers. Bull's dam goes back to the famous J6 Ribeye 123.

J6 GRANDMASTER 969

3/5/22

3/4 SM 1/4 AN

8

J6 GRANDMASTER X EBONYS GRANDMASTER

J6 969 X UNO MAS

BW	88
WW	640
YW	1,100

BW 3.5 WW 62 YW 103 Milk 26 Gain 3.3 SC 42

Thud! The sound this bull would make falling off a 5 ft. ladder. You will see why come sale day. Bull has a very heavy muscled build in a mostly Simmental package. He will be a sale favorite.



Lot 8

2-YEAR-OLD BULLS



DDA EMBLAZON 27C

DOB: 2/1/2002

Angus

AAA# 14257843

D H D TRAVELER 6807
O C C EMBLAZON 854E
DIXIE ERICA OF C H 1019

SHOSHONE 130-6357
D D A MELISA 824
D D A MELISA 545

DDA Emblazon 27C has been put to the test all across the U.S., Canada, Australia and South America. He may be the thickest, easiest fleshing bull we have ever seen and he does it on 100% forage. DDA Emblazon 27C is a five frame bull, weighing 2,300 lbs. after the breeding season. Average birth weight on 148 bull calves is 79 lbs. and on 124 heifer calves is 75 lbs. Phenotypically, this bull is very correct with great feet and legs.

PRODUCTION										MATERNAL						
CED	BW	WW	YW	RADG	DMI	YH	SC	Doc		HP	CEM	Milk	MkH	MW	MH	\$EN
+9	+1.9	+40	+64	+1.16	-.23	-0.3	+0.19	+1		+12	+8	+18	68	+2	-0.5	+19

CARCASS						\$VALUES						
CW	Marb	RE	Fat	Carc	UGP	\$M	\$W	\$F	\$G	\$B	\$C	
+11	+22	+15	+006	1	32	65	41	60	25	85	175	

J6 27C 9025

3/22/22

3/4 AN 1/4 SM

9

DDA 27C X OCC EMBLAZON

J6 9025 X J6 777 X J6 D12

BW	72
WW	590
YW	1,025

BW 1.6 WW 49 YW 87 Milk 20 Gain 2.8 SC 44

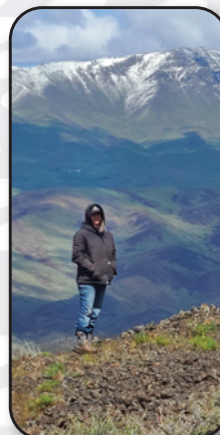
27C son with length and good looks, a lot like the guy on singles.com. Bull can be used in heifers and goes back to a extremely productive line of cows. J6 D12 weaned 14 calves with a 104 weaned nursing ratio.



- Roche bull sold to D Milliron Cattle Co.-



- Joe Nield & Ryker Haderlie running numbers-



- Irish Cattle Co.-
Tracy & Shelly Irish

2-YEAR-OLD BULLS

J6 27 C 9048

3/23/22

3/4 AN 1/4 HERF

10

DDA 27C X OCC EMBLAZON

J6 9048 X RIBEYE X BUTKUS

BW	70
WW	625
YW	1,030

BW 1.9 WW 50 YW 89 Milk 22 Gain 2.6 SC 43

Paternal brother to lots 9-11. All black bull with just a 1/4 shot of Hereford. The best Hereford is always a black one!



Lot 10

J6 27 C 960

3/19/22

3/4 AN 1/4 HERF

11

DDA 27C X OCC EMBLAZON

J6 960 X RIBEYE

BW	80
WW	550
YW	1,005

BW 2.1 WW 47 YW 86 Milk 17 Gain 2.4 SC 43

Almost replicated in type and pedigree to lot 10.



Lot 11



Sam Wight torching bulls at
J6 Clear Creek Ranch



- Wight Ranch -
Bancroft, Idaho



Roche heifer grazing at Wight Ranch



Steve Wight and his world class,
working Border Collies

2-YEAR-OLD BULLS



B P F SPECIAL FOCUS 504

DOB: 1/16/2005

Angus

AAA# 15140670

S A F FOCUS OF E R
MYTTY IN FOCUS
MYTTY COUNTESS 906

J R SOMETHING SPECIAL
B P F BLACK CASH 341
B P F BLACK CASH 944

With nearly identical growth levels to his sire, he offers enhanced Calving Ease, Rib Eye Area and Beef Value. High accuracy, sure-bet calving ease with solid growth, moderate mature size and outstanding scrotal circumference. Elevated In Focus Genetics. His daughters set him apart from the crowd - they are deep bodied and easy fleshing with fault free structure and udder quality.

PRODUCTION										MATERNAL						
CED	BW	WW	YW	RADG	DMI	YH	SC	Doc		HP	CEM	Milk	MkH	MW	MH	\$EN
+12	-1.3	+50	+91	+22	+65	+0	+0.94	+8		+13	+10	+29	269	+5	-0.2	+11

CARCASS							\$VALUES						
CW	Marb	RE	Fat	Carc	UGP		\$M	\$W	\$F	\$G	\$B	\$C	
+34	+71	+33	+0.049	10	393		73	68	91	49	139	253	

J6 SPECIAL DESIGN 0134

3/16/22

PUREBRED ANGUS

12

SPECIAL FOCUS X MYTTY IN FOCUS

J6 0134 X J6 607

BW	80
WW	580
YW	1,000

BW 1.2 WW 44 YW 83 Milk 14 Gain 2.3 SC 43

PB Angus in a calving ease package in a tick larger frame. Lot 12 is top 10% for calving ease and calving ease direct of the Angus breed, also boasting a top 20% carcass index. This bull reflects more terminal than maternal traits.



Lot 12

J6 SPECIAL DESIGN 0128

3/11/22

PUREBRED ANGUS

13

SPECIAL FOCUS X MYTTY IN FOCUS

J6 0128 X J6 610

BW	69
WW	560
YW	925

BW -1.9 WW 40 YW 74 Milk 15 Gain 2.9 SC 42

Same story as paternal brother in Lot 12. Negative BW and heifer friendly.



Lot 13

2-YEAR-OLD BULLS



HOOK'S BALTIC 17B

DOB: 2/27/2014

PB SIMMENTAL

ASA# 2854454

GW PREMIUM BEEF 021TS
GW-WBF SUBSTANCE 820Y
GW MISS MATERNAL 558P

DIKEMANS SURE BET
HOOK'S SARITA 92Y
HOOKS SARITA 4S

Baltic is among the cleanest and most attractive of all the great Substance sons sold in the 2015 Bred for Balance sale. EPD spread, balanced value, depth of body, stoutness, wonderful structure and great disposition are just a few of the reasons this group was so popular and why Baltic is so good. His top 1% value for Yearling Weight improvement couples well with a sire also predicted to be in the top 20% for calving ease.

SPRING 2024 EPDs

CED	BW	WW	YW	ADG	MCE	Milk	MWW	STAY	CEM	DOC	CW	MARB	BF	REA	SF
11.6	2.3	81.9	136.6	0.34	4.2	4.9	45.8	17.1	-	14.2	38.2	0.19	-0.064	1.07	-.62

J6 BALTIC 9005

3/26/22

1/2 AN 1/2 SM

14

HOOKS BALTIC X SUBSTANCE

J6 9005 X CHARLO

BW	88
WW	665
YW	1,045

BW 2.8 WW 65 YW 111 Milk 11 Gain 3.1 SC 40

Values for growth and carcass are in the top 10% of the Simmental breed. This panda bear will really put some performance in a set of feeder calves. Dam is a Charlo cow with a good disposition.



Lot 14

J6 RIBEYE 7109

3/28/22

1/2 AN 1/4 SM 1/4 HERF

15

J6 RIBEYE 123 X RIBEYE

J6 7109 X BUTKUS X MADE RIGHT

BW	78
WW	625
YW	925

BW 1.8 WW 47 YW 84 Milk 18 Gain 2.8 SC 44

Ribeye sired calf with a little more frame than most Ribeye sired cattle. Bull can be used on heifers. Lot 15 bred cows all summer on the Utah ranch. Nice, solid set of EPD's.



Lot 15

2-YEAR-OLD BULLS

J6 BALTIC 972

3/22/22

1/2 SM 1/2 AN

16

HOOKS BALTIC X SUBSTANCE

J6 972 X GOLDMINE

BW	80
WW	650
YW	1,000

BW 2.3 WW 55 YW 107 Milk 14 Gain 3.1 SC 43

Paternal brother to lot 14, with a little less frame and performance. Lot 16 boasts one of the best dams of the sale. J6 972 is a sweet, deep bodied and big topped cow, tipping the scales at approximately 1,200 lbs. Maternally oriented cow maker in Lot 16.



Lot 16

J6 ROBERTS 9021

3/27/22

1/2 SOUTH POLL 1/4 AN 1/4 SM

17

ROBERTS X BENT TREE

J6 9021 X J6 579 X MACHO

BW	77
WW	570
YW	975

BW 1.9 WW 42 YW 73 Milk 17 Gain 2.3 SC 42

Another all black, polled, stout calving ease bull. Very similar to paternal brother in Lot 7. This guy is attractive and will turn some heads come sale day.



Lot 17

J6 ROBERTS 940

3/24/22

1/2 SOUTH POLL 1/2 AN

18

ROBERTS X BENT TREE

J6 940 X CHARLO

BW	71
WW	540
YW	965

BW 1 WW 40 YW 70 Milk 16 Gain 2.4 SC 40

Heifer safe, with a really good Coleman Charlo mother that is maintaining a 103 weaning ratio on 4 calves.



Lot 18

2-YEAR-OLD BULLS

J6 PROFIT 975

3/1/22

3/4 SM 1/4 AN

19

PROFIT X PILGRIM

J6 975

BW	89
WW	640
YW	1,075

BW 2.8 WW 60 YW 107 Milk 19 Gain 3.2 SC 41

A bull that should be used to produce pounds of calves. This guy is strictly terminal, but will produce an awesome performing set of calves.

J6 PROFIT 885

3/2/22

3/4 SM 1/4 AN

20

PROFIT X PILGRIM

J6 885

BW	87
WW	610
YW	1,055

BW 2.5 WW 55 YW 100 Milk 19 Gain 3.1 SC 44

Same story as paternal brother in Lot 19. Bull has a huge scrotal at 44 cm.



BORDER COLLIE PUPS

Available on Sale Day!

"Mollie" - Started 6-month-old FOR SALE!



Contact Hootie at 435-230-0807 for more info!

LONG YEARLINGS

J6 27 C 923

10/8/22

3/4 AN 1/4 BM

23

J6 27 C X DDA EMBLAZON 27 C

J6 923 X J6 RANGMASTER 3003

BW	70
WW	605
YW	985

BW 1.8 WW 58 YW 98 Milk 20 Gain 3.2 SC 40

If you've come to buy one of the truly great bulls of the sale, do not have your finger up your butt when this stud sales. Would like to retain the right to collect this bull one time, at new owners convenience, and our expense. Female maker! I do not know how you could put more natural muscle and rear end in a bull while maintaining an extremely soft made look.



Lot 23

J6 27 C 154

10/15/22

3/4 AN 1/4 BM

24

J6 27 C X DDA EMBLAZON 27 C

J6 154

BW	68
WW	595
YW	970

BW 1.5 WW 55 YW 94 Milk 20 Gain 3.1 SC 43

43 cm. Scrotal on this polled, BWF bull, with just a tick of Beefmaster. Lots 23-25 are all paternal brothers, their dams all paternal sisters and 1/2 blood Beefmasters. For ranching in the dry arid west, I'm not sure you could use better genetically based bulls than these 1/4 BM. If you don't get lot 23, this bull isn't far behind him.



Lot 24

J6 27 C 255

10/28/22

3/4 AN 1/4 BM

25

J6 27 C X DDA EMBLAZON 27 C

J6 255 X J6 428

BW	60
WW	585
YW	955

BW -0.5 WW 48 YW 87 Milk 19 Gain 2.8 SC 38

The most calving ease of the three paternal brothers. Lot 25 is slick haired, and scurred. This bull will handle a tremendous workload. Bull has more libido than Bill Clinton on Epstein Island.



Lot 25

LONG YEARLINGS



BROWN JYJ REDEMPTION Y1334

DOB: 1/14/2011

RED ANGUS

RAAA# 1441805

BECKTON NEBULA M045
BECKTON NEBULA P P707
BECKTON LANA M809 EP

LJC MISSION STATEMENT P27
JYJ MS JOLENE W16
HXC JOLENE R548

This bull is as solid as they come both on paper and phenotypically speaking. Redemption is a household name in all aspects of the cattle industry. Whether for calving ease in heifers, moderate cow size or reeling in a herd's inputs, or in elite donor nucleus programs, Redemption is still your go-to sire. He offers instant name recognition and calving ease for heifers and is ideal for putting downward pressure on feed inputs.

SPRING 2024 EPDs

CE	BW	WW	YW	ADG	DMI	Milk	ME	HPG	CEM	YG	Marb	CW	REA	FAT
+15	-4.8	+66	+116	+31	+2.00	+24	+7	+12	+8	+0.17	+0.61	+27	-0.14	0.02

J6 REDEMPTION 958

10/30/22

3/4 AN RA 1/4 SM

26

J6 REDEMPTION 986 X REDEMPTION

J6 958

BW	64
WW	605
YW	1,005

BW 1.6 WW 62 YW 104 Milk 23 Gain 3.5 SC 36

Lots 23-29 are all sired by bulls that were born and raised on our place, I think that says a lot about what we think about our own bulls. The proof is in the pudding on this dude, you will drive a lot of miles to find a bull phenotypically more pleasing than him. You will definitely want to find this bull April 13th.



J6 REDEMPTION 816

11/3/22

3/4 AN RA 1/4 SM

27

J6 REDEMPTION 986 X REDEMPTION

J6 816

BW	71
WW	580
YW	990

BW 2.2 WW 60 YW 101 Milk 22 Gain 3.1 SC 36

Lots 26-29 are paternal brothers by our straight black and polled herd sire, J6 Redemption, by Brown Redemption. Lot 27 has a pale face and is structurally very correct. Dam is a good Simmental X cow with a maternal index in the top 15% of the Simmental breed with a REA EPD in the top 5%.



LONG YEARLINGS

J6 REDEMPTION 513

11/14/22

3/4 AN RA 1/4 SM

28

J6 REDEMPTION 986 X REDEMPTION

J6 513 X J6 327 X OCC KIDDO

BW	70
WW	575
YW	980

BW 1.1 WW 57 YW 95 Milk 20 Gain 2.7 SC 40

Lots 26-29 all are 1/4 blood Red Angus but will throw virtually zero red calves, as the Redemption line of Red Angus come black, even on red cows.



Lot 28



- Jason Hatch Ranch -

"Roche Bulls have increased our profitability, and we buy them because they are moderately framed, have great calving ease, good growth, and are pleasant to work with. We really like their genetics, and the Angus cross bulls are our favorite."

- Jason Hatch

J6 REDEMPTION 123

10/30/22

3/4 AN RA 1/4 SM

29

J6 REDEMPTION 986 X REDEMPTION

J6 123 X JIPSEY EARL

BW	65
WW	515
YW	900

BW 1.6 WW 51 YW 90 Milk 22 Gain 3 SC 36

Lot 29 is something really special. His dam, J6 123, raised the top selling bull in our 2013 sale: J6 Ribeye 123. He sold to Lou and Teresa Andersen for \$8,000, then we bought him back and used him for several years. We literally have over 100 head of Ribeye offspring in our herd. This bull's dam is still going strong at 13-years-old, weaning 11 calves at 101 weaning ratio. Lot 29 is straight red and hurt his shoulder this fall. Hopefully he is 100% come sale day.



- Gonzalo Manturano -
Clear Creek Ranch, Nevada



- Kevin & Kelli Payne Ranch -



- Rhett & Bobbie Munns - JF Ranch -

LONG YEARLINGS

J6 27 C 981

9/11/22

PUREBRED ANGUS

30

DDA 27C X OCC EMBLAZON

J6 981 X S SUMMIT X BRUISER

BW	70
WW	600
YW	950

BW -1.8 WW 48 YW 80 Milk 15 Gain 2.4 SC 42

A PB Angus bull stacking Angus legends Summit, Bruiser and 27C. BW EPD is top 3% of Angus breed and marbling EPD of +.85. Heifer safe.



Lot 30

J6 27 C 998

10/1/22

PUREBRED ANGUS

31

DDA 27C X OCC EMBLAZON

J6 998 X J6 544

BW	72
WW	540
YW	910

BW 2.2 WW 42 YW 78 Milk 16 Gain 3.2 SC 39

Very similar as paternal brother in Lot 30. Not as much calving ease as Lot 30, but still adequate for heifer use.



Lot 31

J6 27 C 981

9/23/22

3/4 AN 1/4 SM

32

DDA 27C X OCC EMBLAZON

J6 9051 X J6 622

BW	68
WW	575
YW	945

BW 1.2 WW 41 YW 81 Milk 13 Gain 2.7 SC 40

A very good, age advantage bull here with just a shot of Simmental. Logan Alder bought a maternal brother to Lot 32 for \$5,000.



Lot 32

LONG YEARLINGS



COLEMAN CHARLO 2560

DOB: 8/11/2010

Angus

AAA# 16879074

O C C FOCUS 813F

O C C PAXTON 730P

O C C BLACKBIRD 736K

SITZ TRAVELER 8180

BOHI ABIGALE 6014

S A V ABIGALE 6062

Charlo has worked very well in commercial heifer projects, with reports of calving easily, and explosive growth on the calves. Charlo's calves look a lot like him, very wide-based, big-topped, lots of muscle expression and long-sided. Charlo is very long, has a big foot, walks like a cat and has a lot of depth and width to him. His flush sisters in production have beautiful udders, extremely easy fleshing, and like Charlo, are very wide-based and deep-sided.

PRODUCTION									MATERNAL						
CED	BW	WW	YW	RADG	DMI	YH	SC	Doc	HP	CEM	Milk	MkH	MW	MH	\$EN
+9	-0.2	+51	+94	+22	+65	-0.9	+1.34	+5	+7.6	-1	+28	416	-39	-1.4	19

CARCASS						\$VALUES					
CW	Marb	RE	Fat	Carc	UGP	\$M	\$W	\$F	\$G	\$B	\$C
+20	+48	+53	+056	5	451	71	83	67	39	106	208

J6 CHARLO 021

9/10/22

PUREBRED ANGUS

33

COLEMAN CHARLO X OCC PAXTON

J6 021 X HOOVER DAM

BW	55
WW	570
YW	915

BW -2.1 WW 38 YW 69 Milk 15 Gain 2.6 SC 41

A Charlo sired bull, backed by an outstanding, moderate framed, Hoover Dam daughter. If your after a bull that will sire an excellent set of 1,100 lb. cows, this is your bull. Bull will be excellent on heifers. Maternal index is also in the top 10% of Angus breed.



Lot 33

J6 ROBERTS 952

9/22/22

1/2 SOUTH POLL 1/2 AN

34

ROBERTS X BENT TREE

J6 952 X COMRADE X ABSOLUTE

BW	62
WW	540
YW	910

BW 1 WW 41 YW 70 Milk 16 Gain 2.5 SC 36

The last of the South Poll sired, long yearlings. This bull is backed by a long line of PB Angus cows, with low BW and early gestation genetics. Might be the best all-around heifer bull of the sale.



Lot 34

YEARLING BULLS



S A V RAINFALL 6846

DOB: 1/9/2016

Angus

AAA# 18578963

O C C PAXTON 730 P
COLEMAN CHARLO 0256
BOHI ABIGALE 6014

S A V TRAVELER 004
S A V BLACKCAP MAY 4136
S A V MAY 2397

Rainfall sires added length, soundness and unmistakable herd bull presence in his sons. His daughters are stunning in an elegant maternal package. Rainfall sets himself apart with his dominating hip and rear-leg structure with muscle shape and flawless phenotype. He brings calving ease, maternal strength and performance together.

PRODUCTION									MATERNAL						
CED	BW	WW	YW	RADG	DMI	YH	SC	Doc	HP	CEM	Milk	MkH	MW	MH	\$EN
+7	0.4	+56	+108	+29	+78	-0.4	+0.89	+15	+11.9	+11	+26	377	+25	-0.4	3

CARCASS						\$VALUES					
CW	Marb	RE	Fat	Carc	UGP	\$M	\$W	\$F	\$G	\$B	\$C
+25	+72	+69	+005	14	771	81	67	78	58	135	256

J6 RAINFALL 6052

4/2/22

PUREBRED ANGUS

35

S A V RAINFALL X COLEMAN CHARLO
J6 6052

BW	70
WW	600
YW	945

BW 0.8 WW 54 YW 105 Milk 22 Gain 3.1 SC 37

Lots 35-60 represent one of the largest sets of Rainfall sired bulls to sell in the West. Rainfall calves easy, has adequate growth for our environment, moderate mature size and positive energy. These rainfall sons are heifer safe. They were born and raised on the Nevada desert, where their mothers recieved zero hay, all winter long, zero assistance at calving, and hustled all summer long on 60k acres. These bulls summered as high as 8,500' in elevation and know how to travel in the rocks. They were weaned in October on a grass pivot where they grazed until the January. They were developed on grass with a small amount of a bull grower pellet from IFA.



Lot 36



Lot 35

J6 RAINFALL 822

4/1/22

PUREBRED ANGUS

36

S A V RAINFALL X COLEMAN CHARLO
J6 822 X J6 628

BW	74
WW	610
YW	950

BW 1.1 WW 52 YW 103 Milk 21 Gain 2.9 SC 36

One of the top Rainfall sons offered, with a big scrotal which will translate into fertile, productive, females. Most of us raise our own replacements, so we need to pay more attention to the cattle we retain. Focus on maternal traits should be priority one for those of us who raise our own heifers.

YEARLING BULLS

J6 RAINFALL 912

4/5/22

PUREBRED ANGUS

37

S A V RAINFALL X COLEMAN CHARLO

J6 912 X BC LOOKOUT

BW	68
WW	540
YW	905

BW -1.5 WW 48 YW 94 Milk 22 Gain 2.7 SC 31

A little lighter weaning weight, but dam was 13-years-old when she weaned this calf.



Lot 37

J6 RAINFALL 972

4/8/22

3/4 AN 1/4 SM

38

S A V RAINFALL X COLEMAN CHARLO

J6 972 X GOLDMINE

BW	75
WW	625
YW	1,000

BW 2.2 WW 58 YW 109 Milk 23 Gain 3.2 SC 36

Maternal sib to lot 16. One of the best bulls of the sale here in Lot 38.



Lot 38

J6 RAINFALL 9033

4/10/22

3/4 AN 1/4 SM

39

S A V RAINFALL X COLEMAN CHARLO

J6 9033 X GOLDMINE

BW	77
WW	635
YW	1,005

BW 2.4 WW 60 YW 110 Milk 23 Gain 3.3 SC 36

Very similar in pedigree and phenotype to the previous lot, two of my favorites in lots 38 & 39. Very impressive scrotal as well in these Rainfall sired calves.



Lot 39

YEARLING BULLS

J6 RAINFALL 1067

3/29/22

3/4 AN 1/4 SM

40

S A V RAINFALL X COLEMAN CHARLO
J6 1067 X J6 894

BW	68
WW	590
YW	925

BW -1.2 WW 49 YW 88 Milk 18 Gain 2.9 SC 33

1/4 SM with good looks.



Lot 40

J6 RAINFALL 812

4/9/22

3/4 AN 1/4 SM

41

S A V RAINFALL X COLEMAN CHARLO
J6 812

BW	72
WW	600
YW	965

BW 1.9 WW 51 YW 99 Milk 19 Gain 3 SC 36

Damn good bull out of a 14-year-old dam.



Lot 41

J6 RAINFALL 458

3/28/22

PUREBRED ANGUS

42

S A V RAINFALL X COLEMAN CHARLO
J6 458 X 27 C

BW	66
WW	585
YW	945

BW -1.2 WW 49 YW 92 Milk 17 Gain 2.8 SC 31

Heifer safe.



Lot 42

YEARLING BULLS

J6 RAINFALL 0101

4/10/22

3/4 AN 1/4 SM

43

S A V RAINFALL X COLEMAN CHARLO

J6 0101

BW	74
WW	605
YW	975

BW 1.6 WW 55 YW 101 Milk 19 Gain 3 SC 36

1/4 SM with above average growth.



Lot 43

J6 RAINFALL 313

4/7/22

PUREBRED ANGUS

44

S A V RAINFALL X COLEMAN CHARLO

J6 313 X S SUMMIT

BW	69
WW	580
YW	965

BW -1.2 WW 49 YW 90 Milk 20 Gain 2.7 SC 34

Lots 44-47. PB Angus born and raised where the annual precipitation is 8 inches.



Lot 44

J6 RAINFALL 967

4/4/22

PUREBRED ANGUS

45

S A V RAINFALL X COLEMAN CHARLO

J6 967 X BRUISER

BW	72
WW	595
YW	985

BW 1.1 WW 51 YW 100 Milk 22 Gain 3.3 SC 36

Our Rainfall sired calves have been the most consistent in terms of uniformity and performance. Rainfall stamps a very uniform set of calves, his sons should as well.



Lot 45

YEARLING BULLS

J6 RAINFALL 9002

4/11/22

PUREBRED ANGUS

46

S A V RAINFALL X COLEMAN CHARLO

J6 9002

BW	79
WW	610
YW	1,000

BW 2.2 WW 54 YW 106 Milk 21 Gain 3.2 SC 36

Rainfall will sire moderate framed cattle in the daughters retained, and excellent performance for those who sell their calves at weaning. They will then go on to perform for the feeder and the packer. Thank God they will make money for the packer, as they are always very concerned if we are profitable.



Lot 46

J6 RAINFALL 779

4/7/22

PUREBRED ANGUS

47

S A V RAINFALL X COLEMAN CHARLO

J6 779

BW	75
WW	625
YW	1,005

BW 1.8 WW 60 YW 109 Milk 25 Gain 3.1 SC 36

Blake Morgan bought a paternal brother for \$5,250.



Lot 47

J6 RAINFALL 887

4/11/22

PUREBRED ANGUS

49

S A V RAINFALL X COLEMAN CHARLO

J6 887 X COMRADE

BW	68
WW	575
YW	935

BW 1.2 WW 49 YW 89 Milk 18 Gain 2.7 SC 35

Dam of lot 52 has a weaning ratio of over 104 on six head with all three of her heifer progeny being retained in herd.



Lot 49

YEARLING BULLS

J6 RAINFALL 9056

4/15/22

PUREBRED ANGUS

50

S A V RAINFALL X COLEMAN CHARLO

J6 9056 X VAN DYKE

BW	78
WW	620
YW	1,000

BW 2.2 WW 58 YW 101 Milk 22 Gain 3 SC 31

Grandam stems from Van Dyke Angus in Montana. Dam herself is a 2009 model and has weaned 13 calves with an average weaning weight ratio of 105.



Lot 50

J6 RAINFALL 482

4/5/22

PUREBRED ANGUS

51

S A V RAINFALL X COLEMAN CHARLO

J6 482

BW	73
WW	575
YW	930

BW 1.5 WW 48 YW 89 Milk 19 Gain 2.5 SC 34

Another desert-raised Rainfall son that my brother brought off the tip top of Clear Creek Canyon at about 8,500 ft elevation, in a pile of rocks. You simply cannot beat these high desert raised cattle for durability.



Lot 51

J6 RAINFALL 354

4/9/22

PUREBRED ANGUS

52

S A V RAINFALL X COLEMAN CHARLO

J6 354 X S A V BRUISER

BW	74
WW	580
YW	965

BW 1.6 WW 50 YW 101 Milk 20 Gain 3.2 SC 39

Huge scrotal for a bull that was only 11 months old at testing.



Lot 52

YEARLING BULLS

J6 RAINFALL 040

4/12/22

3/4 AN 1/4 SM

53

S A V RAINFALL X COLEMAN CHARLO

J6 040

BW	80
WW	610
YW	1,015

BW 2.5 WW 59 YW 111 Milk 23 Gain 3.1 SC 38

1/4 blood Simmental with a 14-year-old mother. Maternal genetics at their best. Fertility and longevity are 8-10 times more profitable than growth and carcass.



Lot 53

J6 RAINFALL 470

4/14/22

3/4 AN 1/4 SM

54

S A V RAINFALL X COLEMAN CHARLO

J6 470 X BUTKUS

BW	77
WW	590
YW	990

BW 2.2 WW 56 YW 105 Milk 20 Gain 2.8 SC 34

Rainfall sired cattle will be optimum for growth and performance for this part of the world. If you retain ownership on some of your cattle Rainmaker has very good numbers and EPDs for carcass performance.



Lot 54

J6 RAINFALL 0106

3/28/22

1/2 AN 1/2 HERF

56

S A V RAINFALL X COLEMAN CHARLO

J6 0106 X TRASK

BW	85
WW	565
YW	915

BW 2.8 WW 49 YW 88 Milk 17 Gain 2.7 SC 35

The only Rainfall out of a first calf heifer. This bull is really good, and will only get better with time. If you're after a really good BWF half Hereford, don't hesitate on this bull.



Lot 56

YEARLING BULLS

J6 RAINFALL 905

4/8/22

3/4 AN 1/4 SM

57

S A V RAINFALL X COLEMAN CHARLO

J6 905

BW	82
WW	605
YW	1,005

BW 2.7 WW 58 YW 109 Milk 22 Gain 3.3 SC 36

A tick more frame on this 3/4 blood Rainfall son.



Lot 57

J6 RAINFALL 668

3/30/22

1/2 AN 1/2 SM

58

S A V RAINFALL X COLEMAN CHARLO

J6 668

BW	79
WW	570
YW	975

BW 1.2 WW 50 YW 88 Milk 17 Gain 2.9 SC 34

A good looking, striped face, half- blood. His maternal brother sold to Tracy Reese for \$5,000.



Lot 58

J6 RAINMAKER 1019

4/1/22

3/4 AN 1/4 RA

59

S A V RAINFALL X COLEMAN CHARLO

J6 1019 X REDEMPTION

BW	60
WW	550
YW	905

BW -1.2 WW 45 YW 85 Milk 20 Gain 2.8 SC 31

A sure fire calving ease bull, stacking Rainfall and Red Angus sire Redemption on the bottom end.



Lot 59

YEARLING BULLS



EVANS RANGEMASTER

BEEFMASTER

LASATER BULL

LASATER COW

This bull will be 6-years-old this spring, and is sound as a cat. Stemming from the Lasater herd that is world-famous for producing fertile, long lived cows.

SPRING 2022 EPDs

CE	BW	WW	YW	ADG	MCE	Milk	MWW	Doc	CW	YG	Marb	BF	SCROTAL
-	1.5	55	90	-	-	15	-	8	-	-	-	-	1.05

J6 EVANS RANGEMASTER 321

3/22/22

1/2 AN 1/2 BM

61

J6 EVANS X EVANS RANGEMASTER

J6 321

BW	80
WW	605
YW	975

BW 2.1 WW 55 YW 101 Milk 22 Gain 3.1 SC 36

A really good, 1/2 blooded, Beefmaster, with a little bit of color. On a set of mostly black or red cows, you will never notice his color. If this bull wasn't so good, and his dam wasn't one of our best cows, I would have cut this bull based on his color alone. He should really sire a nice set of feeder calves and excellent replacement heifers.



Lot 61



- Forrest Arthur Ranch -

J6 EVANS RANGEMASTER 004

3/25/22

1/2 AN 1/2 BM

63

J6 EVANS X EVANS RANGEMASTER

J6 004

BW	68
WW	575
YW	945

BW -1.5 WW 40 YW 79 Milk 14 Gain 2.5 SC 32

Extreme calving ease, this bull will be a heifer's dream.

YEARLING BULLS

J6 EVANS RANGEMASTER 4015

5/5/22

1/2 AN 1/4 SM 1/4 BM

64

J6 EVANS X EVANS RANGEMASTER
J6 4015

BW	74
WW	610
YW	1,000

BW 2.2 WW 58 YW 109 Milk 19 Gain 3.1 SC 36

Youngest bull of the sale, with a 36 scrotal at 10 months of age. This bull is going to be really good, just give him some time. This bull has a super disposition and a well muscled, deep bodied phenotype.



Lot 64

J6 EVANS RANGEMASTER 898

3/29/22

1/2 AN 1/2 BM

65

J6 EVANS X EVANS RANGEMASTER
J6 898

BW	82
WW	650
YW	1,100

BW 2.6 WW 61 YW 112 Milk 20 Gain 3.2 SC 36

Highest performing bull of the sale. Beefmaster genetics will add performance to your cattle. This bull is solid black and full of muscle.



Lot 65

J6 EVANS RANGEMASTER 664

3/25/22

1/2 RA 1/2 BM

66

J6 EVANS X EVANS RANGEMASTER
J6 664 X REDEMPTION

BW	74
WW	645
YW	1,095

BW 2.5 WW 60 YW 110 Milk 22 Gain 3.3 SC 36

Maybe the best bull of the sale here in lot 66. Bull shows very little Beefmaster influence and his dam, by Redemption, is one of the best cows that walk our place in Nevada. This bull is worth staying till the end of the sale for.



Lot 66

YEARLING BULLS

J6 EVANS RANGEMASTER 011

4/5/22

1/2 BM 1/4 CHAR 1/4 SM

68

J6 EVANS X EVANS RANGEMASTER

J6 011 X BIG BEN

BW	82
WW	600
YW	985

BW 3 WW 55 YW 92 Milk 23 Gain 2.8 SC 34

A bull for someone who raises smokey, Charolais X calves. This bull will sire a really nice set of calves alongside your Charolais bulls. His dam is an own daughter of Big Ben. We sold several Big Ben sons a couple of years ago to Shamus Haws and Lloyd Miner and they have gotten along really good with them. Big Ben is a Charolais bull owned by ABS.



Lot 68

J6 EVANS RANGEMASTER 717

3/20/22

1/2 BM 1/2 AN

70

J6 EVANS X EVANS RANGEMASTER

J6 717

BW	78
WW	610
YW	1,005

BW 2.8 WW 52 YW 99 Milk 22 Gain 3 SC 31

This bull should have been put right after lot 65, they are very similar, except for lot 70 is cleaner sheathed. Exceptional bull to put on predominantly Angus cows to add heterosis.



Lot 70



- Craig & Linda Hawkes Ranch -
Craig's granddaughter's, Gabby
and Isabel, helping on the ranch.



- Morgan Cattle Co. -



- Carter Ranch -
Blaine Elke Carter

COVER YOUR HIDE[®]



Risk Management Tools

Pasture, Rangeland, Forage

Offsets the cost of additional feed expenses due to lack of rainfall.



Livestock Risk Protection

Flexible price risk protection for livestock.



Pasture Fire Insurance

Cost-effective grass fire coverage.



Aaron Tattersall

Aaron.Tattersall@cropins.net

303-854-7016

AgRisk Advisors strives to honor God and enrich the lives of everyone they encounter by helping the American rancher and farmer manage risk.



AgRisk
ADVISORS[®]

With you... No matter the weather.

powered by  **Silveus**
INSURANCE GROUP

(303) 539-9300

6130 Greenwood Plaza Blvd. Suite 110
Greenwood Village, CO 80111

AgRiskAdvisors.com

The information contained herein is not an offer to sell insurance. No binder, insurance policy, change, addition, and/or deletion to insurance coverage will be effective unless and until confirmed directly with a licensed agent. Please note any proposal of insurance we may present to you will be based upon the values developed and exposures to loss disclosed to us by you. All coverages are subject to the terms, conditions and exclusions of the actual policy issued. Not all policies or coverages may be available in every state. All insurance products are offered through Silveus Insurance Group, Inc.
02.2021



TREMONTON

781 East Main Street

(435) 257-0179

westernagcredit.com

Bear River Animal Hospital

Dr. Ira Mickelsen - Dr. Ryan Bevan

Dr. Phillip Firth - Dr. Dustin Meyer

390 West 600 North | Tremonton, UT 84337

Your Local Large & Small Animal Veterinarians



24 Hour Emergency Care

MOUNTAIN STATES STOCKDOG ASSOCIATION

NATIONAL FINALS



AFTON, WY



2024 National Finals

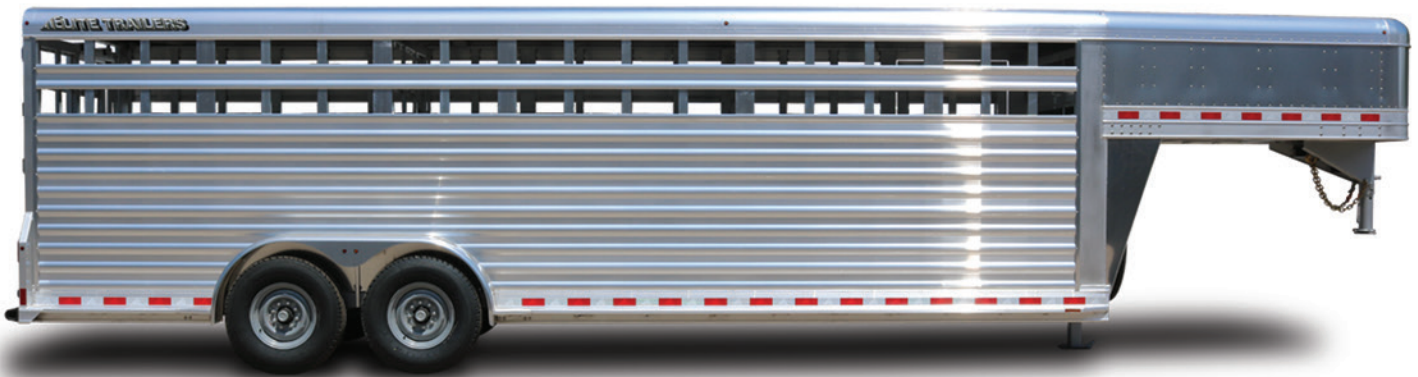
JUNE 17-22, 2024
AFTON, WYOMING

WWW.MOUNTAINSTATESSTOCKDOG.COM



Contact: Shawn Banks 208-339-2643
Authorized IFA, Crystalyx, Key-Lix, Redmond, Volac Dealer
Mineral, Tubs, Salt, Fence, and Much More
We Deliver!

YOU COULD WIN...

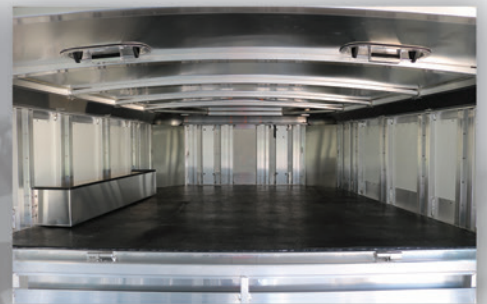


THE USE OF AN ELITE TRAILER FOR ONE YEAR

**2 BULL PURCHASE MINIMUM
TO BE ENTERED IN RAFFLE**

**EACH BULL PURCHASED AFTER (2)
GETS AN ADDITIONAL ENTRY**

**RAFFLE WILL BE
HELD AT END OF SALE**



2023 TRAILER RAFFLE WINNER

Lloyd Miner - Plymouth, Utah

TRAILER PROVIDED BY C&R TRAILER SALES

ELITE TRAILERS

C&R
Trailer Sales
Tremonton, Utah

(435) 257-8237



ARCHIBALD PETROLEUM PRODUCTS
For All Your Fuel & Oil Needs - Tremonton, Utah

Roche Ranches



TREMONTON IFA COUNTRY STORE

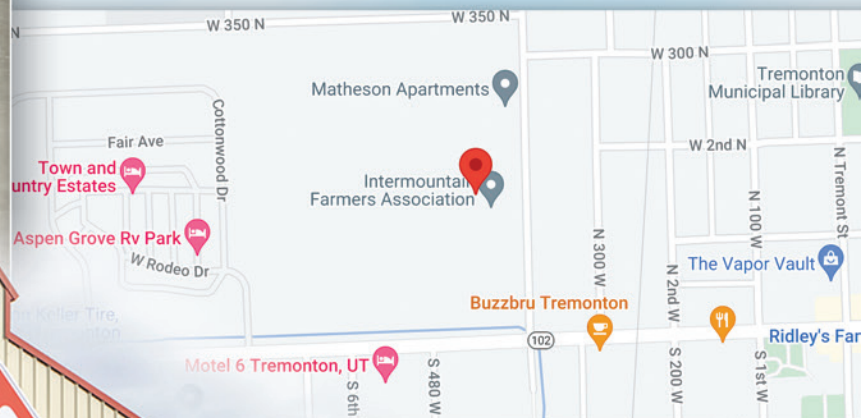
440 W Main St, Tremonton, UT 84337, USA

Store Hours: 8am to 8pm | Mon.-Sat. (closed Sun.)

Phone Number: (435) 257-5419



- Lawn & Garden Supplies
- Western/Work Apparel
- Farm & Ranch Supplies
- Turf & Ornamental Supply/Services
- Livestock & Pet Feed & Nutrition
- Outdoor Living





VIEWING THE AUCTION ONLINE

The auction will be broadcast online at **Bid.SuperiorLivestock.com** and the pre-recorded videos will also be hosted there prior to and on sale day. You do not need an account or login just to watch the auction.

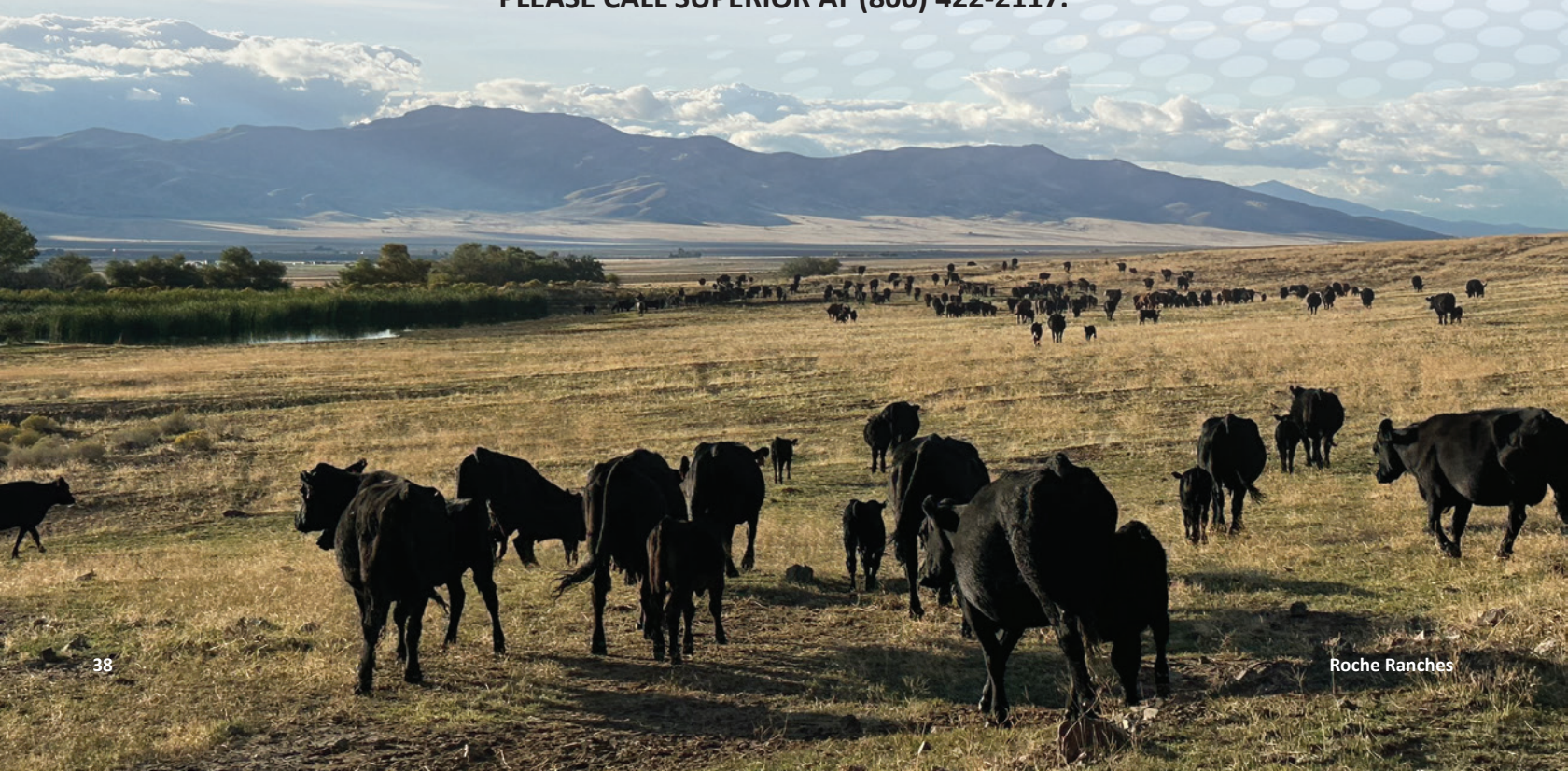
ONLINE BIDDING

Go to **Bid.SuperiorLivestock.com** for Superior's new online bidding platform. If you have not registered there before you will need to create an account if you wish to bid (there is no registration required just to watch the auction). Once you have created an account, request a buyer number and you will then be able to bid online with the largest and most trusted cattle marketing entity in North America. Superior's new platform allows you to see both the live stream of the auction AND the pre-recorded videos on one screen at the same time!

TURN IN BIDS OVER THE PHONE

This is Superior's suggested bidding method for anybody who does not have consistent, high-speed internet. You still must register an account at **Bid.SuperiorLivestock.com** and request a buyer number and upon doing so you will see the bid line phone number. Just watch the auction online and call in at least 2 lots ahead of the lot you are looking to bid on.

**FOR HELP WITH REGISTRATION OR ANY PART OF THE BIDDING PROCESS
PLEASE CALL SUPERIOR AT (800) 422-2117.**



2023
Sale



ROCHE RANCHES



- End of February -
Get out and work, girls!



- Birthday Dinner -
Ty Anderson, Hootie & Pedro Reyes



- Garland Ranch - Tremonton, Utah -
Dr. Ryan Bevan, our veterinarian,
from Bear River Animal Hospital



Buck lost his boot on a 13 mile cattle push.



- Hootie & Buck -



- Hootie - "Captain Moroni" -
at Church Youth Trek Vignette

Jhett & Tyton Roche are both serving missionaries for the Church of Jesus Christ of Latter Day Saints.



- Jhett is serving in Santa Rosa, California, Spanish Speaking Mission -



- Tyton is serving in the Curitiba South Brazil Mission -



ROCHE RANCHES



- Luci & Alice -



- Alice & her show steer -



- Hootie & Dusty -
Clear Creek Ranch



Semi unloading at the Utah Ranch.



- Tyton, Buck, Luke Watts & Jhett -
All part of the Roche Family



- Hootie, Chrissi & Alice -
National Finals Rodeo



Horses grazing at the Utah Ranch.
Roche Ranches



- Hootie & Buck -
Clearing new fence lines.



- Cow/Calf Pair 678 -
Clear Creek Ranch

TERMINOLOGY:

EPD - Expected Progeny Difference - The expected difference in performance of a bull's progeny compared to the performance of another sire's progeny. In other words, EPDs for one animal are meaningless until they are compared to EPDs of another animal. For example, if Sire A has a birth weight EPD of 4.0 and Sire B has a birth weight EPD of -2.0, then calves from Sire B would be expected to average 6 pounds lighter at birth than calves from Sire A if the bulls are randomly mated in the same herd. EPDs are designed to compare sires within the same breed.

Acc. - Accuracy - A measure of reliability of an EPD expressed between 0 and 1.0. Accuracies closer to 1.0 means the EPD is a more reliable estimate of a sire's true genetic value for the trait.

% Rank - Based on percentages, this indicates where a bull's EPD ranks him in the entire population of his respective breed.

CED or CE - Calving Ease Direct is the difference in percentage of unassisted births when a sire is bred to first calf heifers. A higher number is desirable.

BW - Birth Weight EPD predicts the difference in average birth weight of a bull's calves compared to calves of another bull. Reported in pounds, a lower number is desirable.

WW - Weaning Weight EPD predicts the difference in average 205-day weight of a bull's progeny compared to calves of another bull. Reported in pounds, a higher number is desirable.

YW - Yearling Weight EPD predicts the difference in average 365-day weight of a bull's progeny compared to progeny of another bull. Reported in pounds, a higher number is generally desirable.

YH - Yearling Height (Angus) - The YH EPD predicts the difference in yearling hip height of a bull's progeny compared to progeny of another bull. Reported in inches, ideal values vary depending on production environment.

SC - Scrotal Circumference - The SC EPD predicts the difference in yearling scrotal circumference of a bull's male progeny compared to progeny of another bull. Reported in centimeters, a larger number is desirable.

CEM or MCE - Calving Ease Maternal is expressed as a difference in percentage of unassisted births of a sire's daughters as first-calf heifers when compared to daughters of other sires. Reported as a percentage, a higher value is desirable.

Milk - The Milk EPD predicts the difference in average 205-day weight of a bull's daughters' calves compared to the calves from daughters of another bull. Reported in pounds, ideal milk values depend heavily upon the nutritional environment of the herd.

MWW - Maternal Weaning Weight (Simmental)

M&G - Milk and Growth (Hereford)

TM - Total Maternal (Red Angus)

The EPD predicts the Weaning Weight of a bull's daughters' progeny and reflects both the milking ability of a bull's daughters and the growth potential of their calves. Reported in pounds, higher numbers are generally desirable.

SEN - Cow Energy Value (Angus), expressed in dollars saved per cow per year, the EPD assesses differences in cow energy requirements for daughters of sires. A larger value is more favorable when comparing two animals (more dollars saved on feed energy expenses). SEN savings differences account for lactation energy requirements and mature size of cows.

Stay - Stayability (Red Angus & Simmental) - The stayability EPD predicts the probability of a bull's daughters staying in production to at least six years of age compared to daughters of another bull. Reported as a percentage, a higher value is desirable.

Carcass Traits - EPDs for carcass traits are calculated using weighted averages of yearling ultrasounds and progeny carcass data.

CW - Carcass Weight - The EPD predicts the difference in hot carcass weight of a bull's progeny compared to progeny of all other bulls evaluated at a given endpoint. Reported in pounds, a higher number is generally desirable.

Marb - Marbling - The EPD predicts the difference in average USDA marbling score of a bull's progeny compared to progeny of another bull at a similar end point. Reported in degrees of a marbling score, higher values are desirable.

REA - Ribeye Area - The EPD predicts the difference in ribeye area of a bull's progeny compared to the progeny of another bull and is an indicator of total muscle in the carcass. Reported in square inches, larger numbers are generally desirable.

Fat - The EPD predicts the difference in fat thickness of carcasses, measured between the 12th and 13th ribs, of a bull's progeny compared to progeny of another bull. Reported in inches, lower values are desirable.

YG - Yield Grade (Simmental) - The EPD predicts differences in USDA Yield Grade of a bull's progeny compared to progeny of another bull. Reported in tenths of a USDA YG, lower numbers are desirable.

\$Value Indexes (Angus)

Weaned Calf Value (\$W), an index value expressed in dollars per head, is the expected difference in value of a bull's progeny at weaning compared to progeny of another sire. \$W accounts for differences in birth weight, weaning weight direct, maternal milk, and mature cow size.

Feedlot Value (\$F), an index value expressed in dollars per head, is the expected difference in value of a bull's progeny for postweaning feedlot performance compared to progeny of another sire.

Grid Value (\$G), an index value expressed in dollars per head, is the expected difference in value of a bull's progeny when sold on a carcass grid basis compared to progeny of another sire.

Beef Value (\$B), an index value expressed in dollars per head, is the expected difference in value of a bull's progeny for postweaning growth performance and carcass value compared to progeny of another sire.

Indexes (Simmental)

All-Purpose Index (API), expressed in net dollars returned per cow exposed, evaluates Simmental sires being used on the entire cowherd (bred to both Angus first-calf heifers and mature cows) with a portion of the daughters retained for breeding and the steers and remaining heifers fed and sold on a carcass grade and yield basis. With the exception of shear force (tenderness), all EPDs are considered in this index.

Terminal Index (TI), expressed in net dollars returned per cow exposed, evaluates the merit of sires when bred to mature Angus cows and all progeny are fed and sold on a carcass grade and yield basis. Consequently, maternal traits such as milk, stayability and MCE are not considered in this index.

\$Value Indexes (Shorthorn)

\$CEZ - (\$ Calving Ease) This index assumes a bull will only be mated to heifers, not cows. The potential profitability of the sire is measured by the incidence of live calves at birth. Moderate mature size is also emphasized in the index., but performance is not a priority. This index is also a good measure of Shorthorn females' ability to produce calving ease sires. Overemphasis of \$CEZ may cause unwanted depression of weaning and yearling performance.

\$F - (\$ Feedlot) Similar to a Terminal Sire scenario, \$Feedlot places strong emphasis on growth and carcass traits. This multi-trait index assumes the sire will be mated to a mix of heifers and cows and attempts to measure profitability when progeny are sold on the fed market. On the female side, mature size should be monitored closely when selecting for \$F. Overselection may cause detrimental harm to longevity, reproductive efficiency and fleshing ability.

\$BMI - (\$ British Maternal Index) As the name implies, this multi-trait selection index attempts to measure a bull's potential profitability when complimenting the British cow base (Angus, Red Angus, Hereford, etc.). Shorthorn females can likewise be gauged at adding value to British or British-composite bulls of other breeds. A balance of growth and carcass traits is desired with a strong maternal component aimed at optimum reproductive efficiency and cow longevity.

For all your FINANCIAL NEEDS

Give Brad or Jake a call!

Brad Peterson C: 435-757-4269
W: 435-755-2518

Jake Miller 435-753-3020 (Ext: 4133)
C: 435-730-3699



CACHE
VALLEY
BANK

Member
FDIC

www.cachevalleybank.com

NOTES

THANKS FOR
JOINING US!
SEE YOU NEXT YEAR
ON APRIL 12, 2025
FOR THE 21ST
ANNUAL ROCHE
RANCHES BULL SALE





17100 North 6000 West
Garland, UT 84312

2023 High Sellers



Lot #2- J6 27C 953
Sold to Blake Morgan for \$8,000



Lot #3- J6 27C 965
Sold to Kevin Payne for \$6,800

Thank you 2023 top buyers!

SALE BOOK PROUDLY DESIGNED BY:
Kelsey Steinkraus | Champion, NE
kelseysteinkraus@gmail.com



YOU COULD WIN...



THE USE OF AN ELITE TRAILER FOR ONE YEAR

Selling:
20 2-Year-Old Bulls
12 Long Yearling Bulls
42 Yearling Bulls
40 Pairs & Heavy Bred Cows

SUPERIOR
LIVESTOCK AUCTION
bld.superiorlivestock.com | 800.422.2117

